

# CERTIFICATE OF LOCATION OF GOVERNMENT CORNER

EAST QUARTER Corner of Section 20, Township 106 N., Range 42 W., 5<sup>th</sup> P.M.

STATE OF MINNESOTA, County of MURRAY

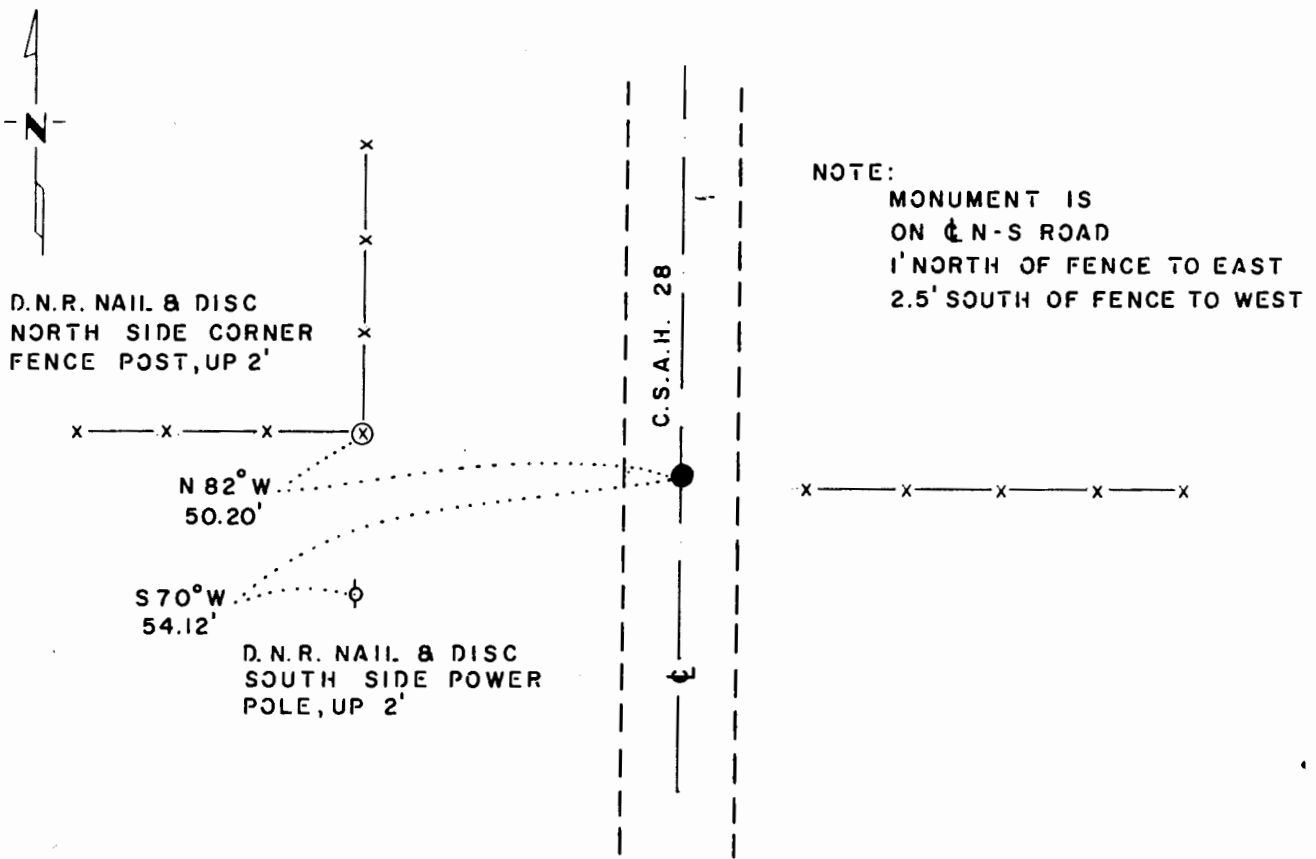
At the corner location shown on the sketch:

On 11-2-83 found a 3/4" x 8" REBAR, DOWN 0.2', OVER A 10" x 12" x 20" FIELD  
STONE, DOWN 24"

left monument as found,  lowered monument,  removed monument (explain)

On 11-2-83 placed a 1 1/4" x 1 1/4" x 20" PERFORATED STEEL TUBE WITH  
ALUMINUM CAP STAMPED "D.N.R. SURVEY MARKER" OVER STONE, DOWN 4"

### SKETCH OF REFERENCE TIES



### BEARINGS OBSERVED WITH COMPASS

Statement of evidence relative to this corner location is on back of page.

J. B. M. 4-2-84  
G-1158

I hereby certify that this document and the data contained herein was prepared by me or under my direct supervision.

Lowell R. Pomeroy Jr. 6-16-86  
SIGNATURE DATE

Registration No. 17005

- Land Surveyor,  Professional Engineer
- County Surveyor,  County Engineer

### OFFICE OF THE COUNTY RECORDER

County of \_\_\_\_\_

I hereby certify that this document was filed in the Co. Recorders office at \_\_\_\_\_ M. on the \_\_\_\_\_ day of \_\_\_\_\_ A.D., 19 \_\_\_\_\_

County Recorder \_\_\_\_\_

By \_\_\_\_\_, Deputy

DOCUMENT NO. \_\_\_\_\_

East Quarter Corner Section 20, Township 106 North, Range 42 West

This corner was originally established by the U. S. General Land Office survey in 1866. The government notes show corner marked with a wood post set in mound of earth with pits and trench dug around the mound.

In November 1983, the DNR Bureau of Engineering contacted the Murray County Offices of the Recorder and Highway Engineer for corner information.

The following information was obtained from the County Recorder's Office:  
Surveyor's Record Book A, on Page 228, contains a survey by J. W. Woolstencraft, dated November 10, 1912. Survey shows corner is a 10" by 12" by 20" stone in the road. Corner measures 2640 ft. from adjoining section corners.

This information is also contained in a Surveyor's Record Book in the Highway Engineer's Office. Engineer's copy also has ties to the corner by F.A. March, date not indicated. Corner is a stone with ties:

- R.P. tack in corner fence post, east 33.1 ft. fence 3 ft. south of stone
- R.P. tack in telephone pole northeast 37.8 ft.
- R.P. tack in west corner fence post-on line 33.9 ft.

Surveyor's Record Book A, on Page 229 contains a survey by J. W. Woolstencraft, dated November 20, 1912. Survey states see Section 20 survey (Page 228). Survey on Page 229 shows a distance of 1323 ft. to the north sixteenth corner of the southwest quarter of Section 21 where a stone was set in a mound.

This information is also contained in a Surveyor's Record Book in the Highway Engineer's Office.

In November 1983 the DNR Bureau of Engineering traversed to the area of the corner and found a 3/4" by 8" rebar down 0.2 ft. over a 10" by 12" by 20" field stone down 24" at natural ground. Left stone as found and set the rebar on north side of stone flush with top. Stone measures:

- 2639.00 ft. to the southeast corner Section 20
- 2637.65 ft. to the northeast corner Section 20
- 1322.38 ft. east to a corner fence post

Accept the found stone as the location of the corner.

Traverse information is available from the DNR Bureau of Engineering.

9hab/cors